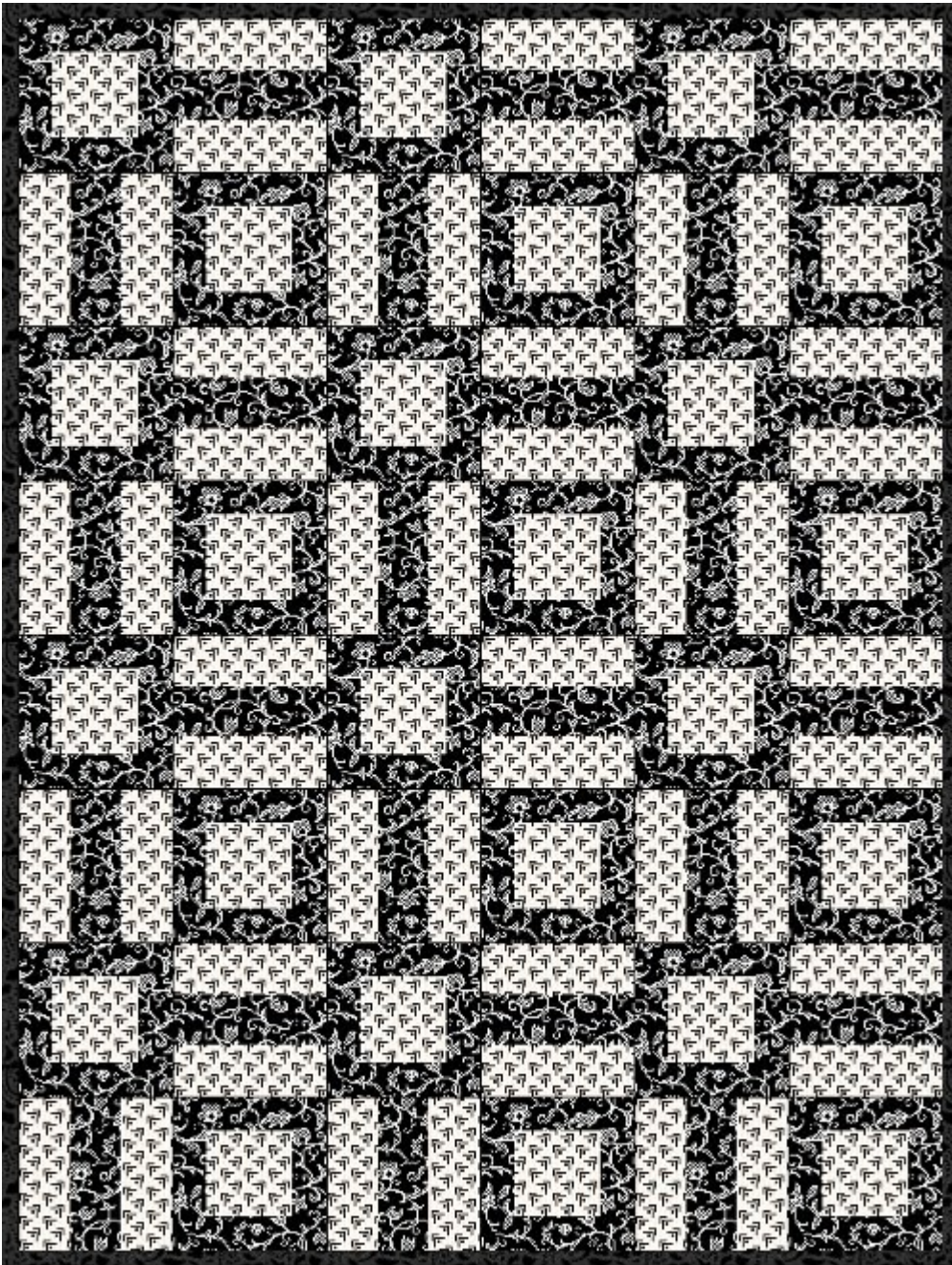


I don't know about you but I have always wanted to make a quilt with just black and white prints. I designed this pattern with a person in mind. She likes contemporary quilts. This pattern is great for two color quilts.

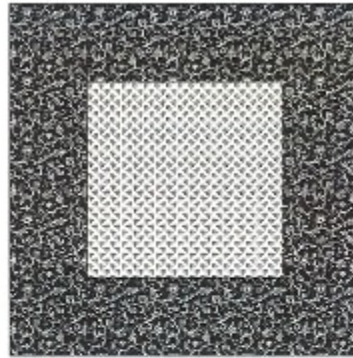
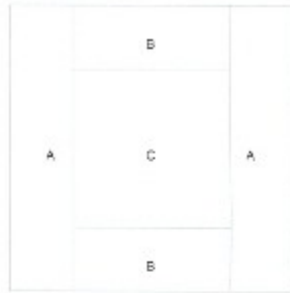


You will need to make 24 of each of the quilt blocks.

The pattern is 6 rows by 8 rows, measuring 56 x 74 inches finished.

The size is not quite twin sized. You could make 54 blocks and it would be big enough for a twin bed.

Worktable Block
 Pattern for 9 1/2" x 9 1/2" block
 (Key Block (27/100 actual size))



Cutting Diagrams



Patch Count

Rotary cutting instructions printed from EQB:

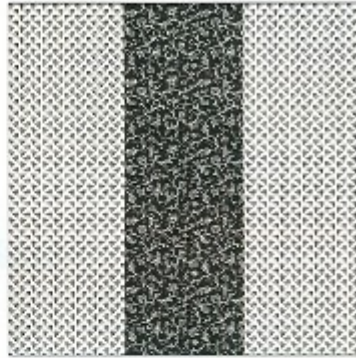
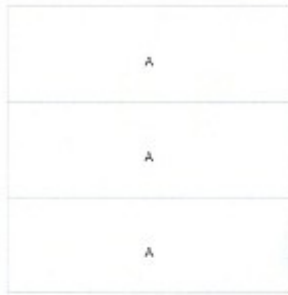
You will need 48 9 1/2 x 2 1/2 inch strips of a dark print

48 5 1/2 x 2 1/2 inch strips of a dark print

24 5 1/2 inch squares of a light print

You are going to sew the 5 1/2 x 2 1/2 inch strips to the top and bottom of the 5 1/2 inch squares. Iron up towards the dark fabric. Then you will sew the 9 1/2 x 2 1/2 inch strips on the sides again ironing towards the dark fabric. These blocks should measure 9 1/2 inches square.

Worktable Block
Pattern for 9.00x9.00 block
Key Block (27/160 actual size)



Cutting Diagrams



Patch Count

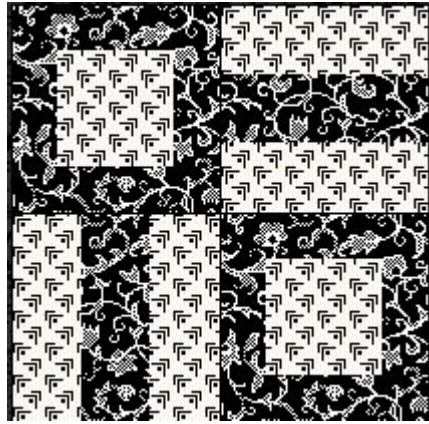


2 patches

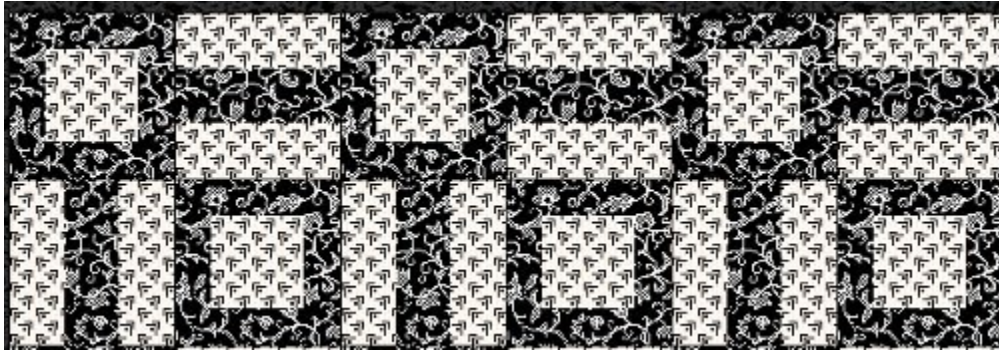


1 patch

You will need 48 $9 \frac{1}{2}$ x $3 \frac{1}{2}$ inch strips of the light print and 24 $9 \frac{1}{2}$ x $3 \frac{1}{2}$ inches of the dark print.
Sew them together like shown above with the dark color in the middle. Once all your blocks are finished you will start sewing them together like this using two of each block.



You will sew 3 blocks like this to make the first row.



Then make 3 more rows. Sew your rows together to make a top. There are no borders on this quilt. Just black binding.